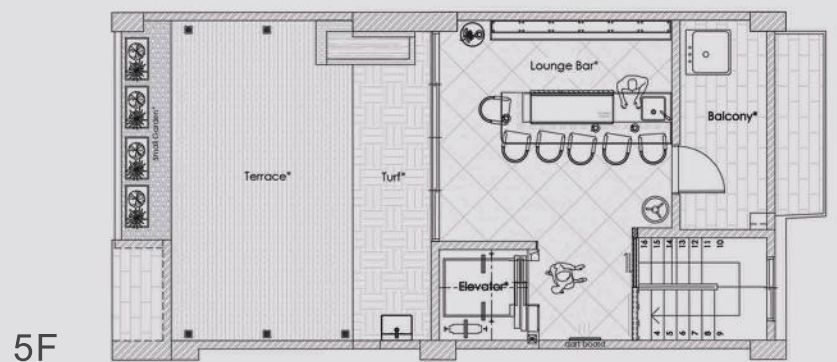
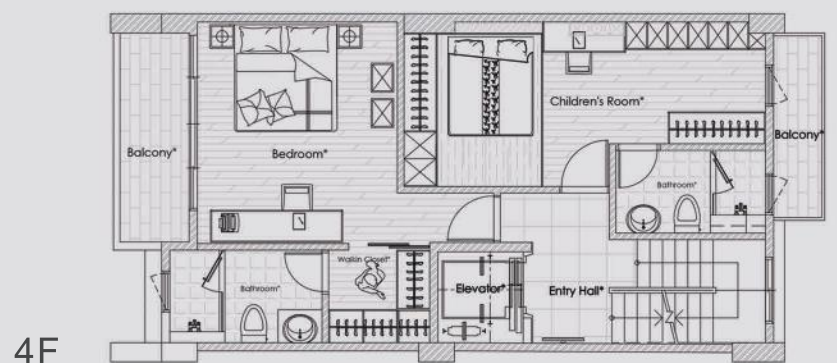
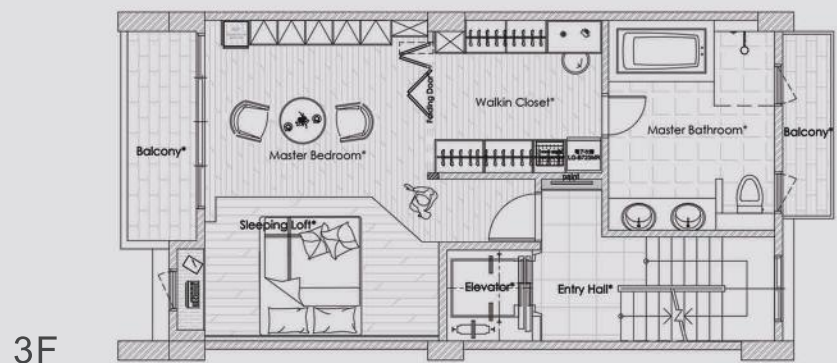
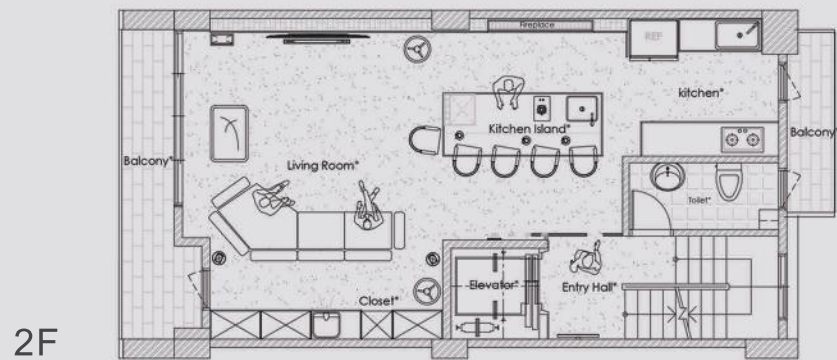
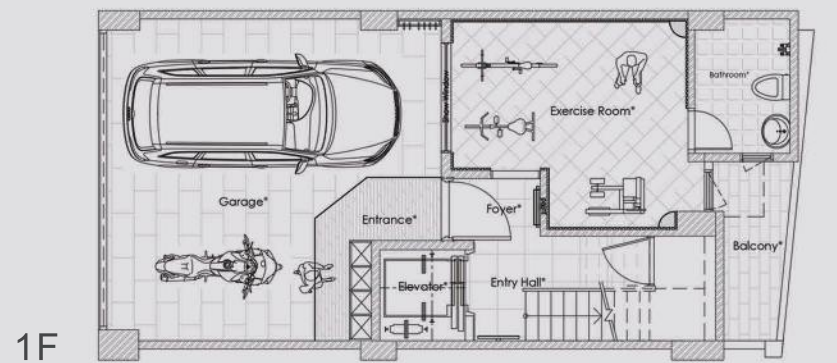




Amusement Park of Instance Dungeon

————— a duplicated space in online game





A non-conventional second home for the owners, it resembles an Instance Dungeon, a duplicated space in online game, that comprehensively gathers personal hobbies. The design from the first floor to the fourth floor employs the endeavors of commercial space design, which is dedicated to fitness, socializing, lodging, and wine tasting.

With minimal demolition of the old structure, the design conserves space by using color-coordinated materials to establish distinct thematic styles for each layer of space. Beyond private recreation, it serves as a hospitality venue for the homeowners to share enjoyment of life with friends.



In response to the homeowners' profound dedication to various interests, each floor is exclusively dedicated to a specific theme, ensuring that each hobby attains a professional standard. Tailoring the design to the unique characteristics of each floor, red-fired kiln stones are selected for the gym, wooden materials connect the terrace bar, and exposed concrete slabs contribute to a sociable atmosphere.

The material connections and color choices resonate with the present mental state, presenting distinct personal traits to accommodate the moods of passion, tranquility, relaxation, and intuition in the four situational modes.



For clients with a robust dedication to fitness, the designated space must incorporate a professional gym. Considering the load capacity and equipment transportation, the gym is situated on the first floor, alongside the garage.

To counteract the fatigue associated with prolonged periods in enclosed spaces, a dual-viewing window between the garage and gym is featured, so the clients can admire their collection of sports cars while working out. The inclusion of red kiln stones adds vibrancy to the atmosphere, and the gym doubles as a personalized backdrop for the garage, effectively addressing spatial limitations.

1 F

gym & garage



For clients with a robust dedication to fitness, the designated space must incorporate a professional gym. Considering the load capacity and equipment transportation, the gym is situated on the first floor, alongside the garage.

To counteract the fatigue associated with prolonged periods in enclosed spaces, a dual-viewing window between the garage and gym is featured, so the clients can admire their collection of sports cars while working out. The inclusion of red kiln stones adds vibrancy to the atmosphere, and the gym doubles as a personalized backdrop for the garage, effectively addressing spatial limitations.



2F

kitchen



The second floor incorporates exposed concrete slabs and gray paint, establishing a serene ambiance through well-defined sections and a coherent color scheme. This instills a sense of tranquility that extends to the open kitchen, creating broader vision. An orange leather sofa is selected to foster cohesion and converges towards the center, encouraging interaction between hosts and guests.



With a focus on spatial continuity and lighting, a new partition is introduced to craft an indoor-outdoor kitchen. This space accommodates complete kitchen cabinets and meets the working conditions for a hired chef team, catering to private dining parties.



3 F

sleeping area



The third floor utilizes a raised platform to establish a sleeping area, harmonizing with the background color of the dressing room to create a serene, forest-like ambiance conducive to good sleep.



Top floor

rooftop bar



The rooftop bar integrates with a countryside-themed terrace, turning the outdoor space into a sitting area.



While preserving the original layout, the renovation leverages visual connections between elements, minimizing demolition and enabling efficient refurbishments. This strategy saves materials and costs, and prevents unnecessary depletion of resources. The renovation of the entire building is accomplished by challenging traditional ideas.